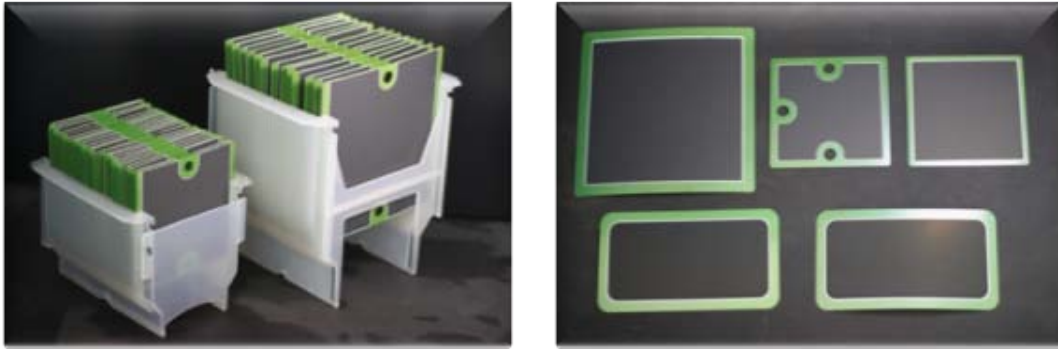


## Anode-supported Cells



### Features:

- High Power Density
- High Mechanical Strength
- High Planarity
- Customized Size & Shape

### SEM Pictures

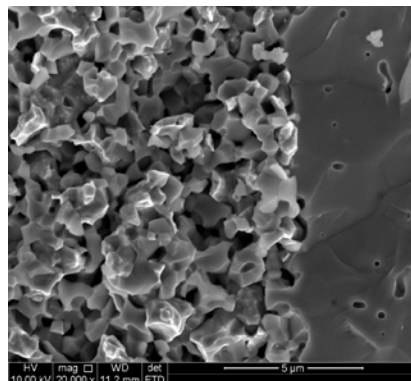


Fig. 1 Transverse Cross Section SEM pictures of Anode and Electrolyte Layer of Anode-supported Cell

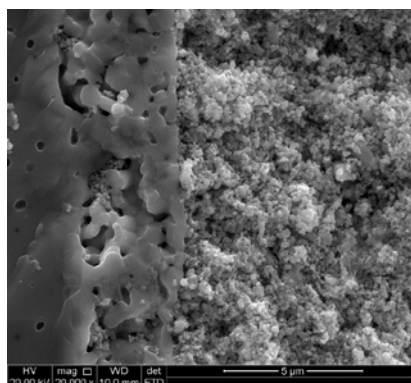


Fig. 2 Transverse Cross Section SEM pictures of Electrolyte, GDC Diffusion Barrier Layer and Cathode of Anode-supported Cell

**Performance:**

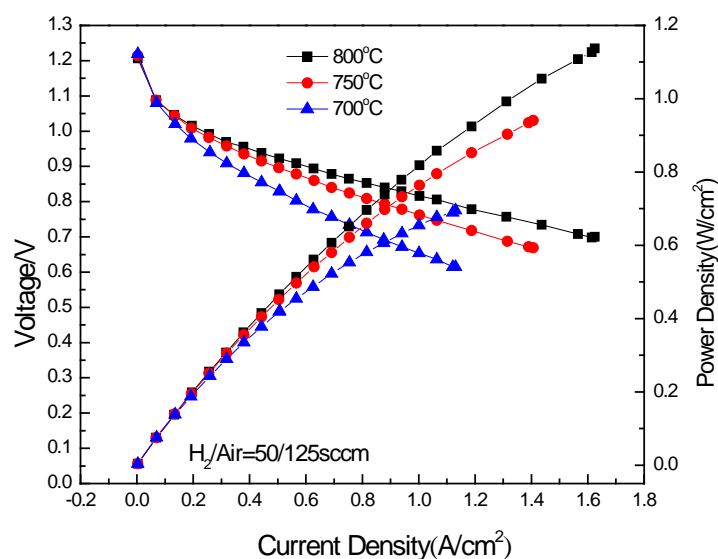


Fig. 3 Electrochemical Performance of Anode-supported Cell

**Technical Data:**

Product Type	Anode-Supported Cell
Cathode/Thickness	LSCF+GDC/20~25 $\mu$ m
Diffusion Barrier Layer/Thickness	GDC/2~3 $\mu$ m
Electrolyte/Thickness	YSZ/10~15 $\mu$ m
Anode/Thickness	NiO+YSZ/400 $\mu$ m
Bending Strength	$\geq 250$ MPa
Power Density	$\geq 0.7$ W/cm <sup>2</sup> (750 $^{\circ}$ C, 0.7V)
Size	Button to 15cm $\times$ 15cm

**Price List:**

Size	Price
6cm $\times$ 6cm	180.00 RMB
10cm $\times$ 10cm	228.00 RMB
15cm $\times$ 15cm	600.00 RMB

\*Cell size can be customized.

Contact:

Ms. Zhang Yi, Sales Manager, Email:yzhang@sofcman.com, Phone:+86-574-86688219,

Mobile:+86-15306692171

Dr. Wang Weiguo, Director, Email:wgwang@sofcman.com, Phone:+86-574-87911363,

Mobile:+86-13867802227